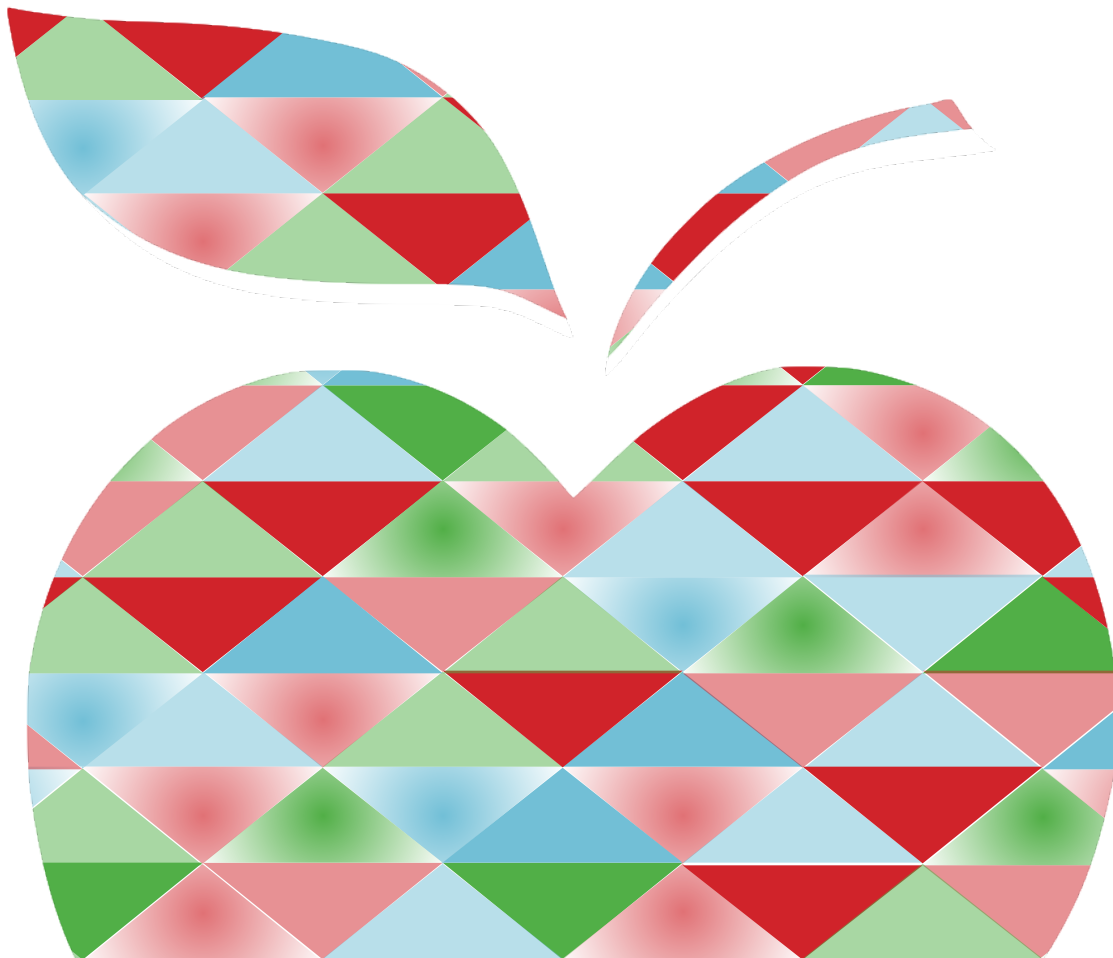


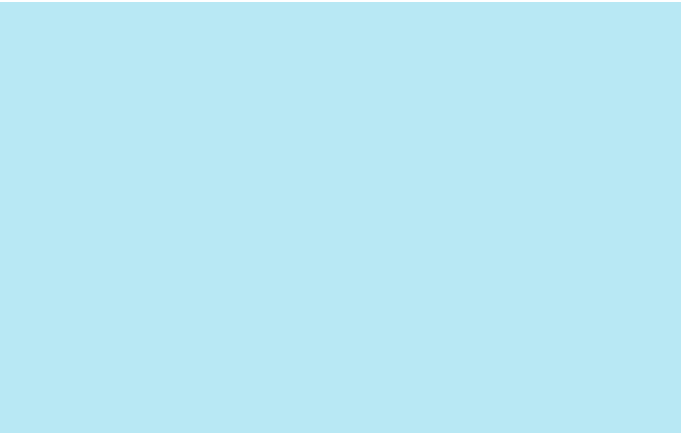


**2015 - 2016
Annual Report**

PPIE



Quality education is built on a strong foundation.



Board of Directors 2015-2016

Executive Board

Bob Miller, President
Kelly French, Vice President
Stephen Hilton, Secretary
Laurie Whiteland, Treasurer

Board of Directors

Cheryl Atkins
John Clatworthy
Cheryl Cook-Kallio
Jodie Fialho
Brian Gentry
John Godi
Jim Hansen
Joan Laursen
Wendy Schmit
Bill Wheeler

Student Representatives

Arthur Hwang,
Amador Valley High School

Hannah Malie,
Foothill High School

Staff

Susan Hayes, Executive Director
Sarah Baer, Data Manager

Tax ID# 943046738

Message from the President

On behalf of the foundation's Board of Directors, I'd like to take this opportunity to thank everyone across our great community for helping us to deliver our best year ever in support of our students! As a board we continue to be humbled by the generosity of our families, teachers, and corporate partners as we all strive to deliver against our mutual goal of excellence in education. From the Giving Fund to the PPIE Run for Education and everything in between, we accomplished so much this year and we couldn't have done it without everyone's unwavering support.

In 2015-2016, through the generous contributions of all of you, PPIE's donation to the Pleasanton Unified School District this year totals \$622,649! This record amount allowed us to fund a wider variety of programs than ever, including four district-wide Instructional Coaches that support our teachers, the popular elementary band and strings program and funds for individual school sites to allow them to support their unique technology needs not yet funded by the district technology plan.

A wise man once said "*a journey of a thousand miles begins with a single step.*" When we embarked on this journey of educational excellence nearly 30 years ago, I don't think any of us would have expected just how difficult school funding would have become today. However, having started this journey and recognizing the experiences we have gained along the way makes me confident that together we can achieve many successes for our students.

Finally, while the journey we are on might have begun with the proverbial single step, there's no doubt that our journey is more rewarding and more successful with a thousand steps, marching in unison toward our common goal. Every step we have taken together, as a true partnership with our businesses, our educators and our community, has truly enhanced the learning experiences of every student.

On behalf of those students, I once again thank you for being with us on this journey and for your unwavering support.

Bob Miller
President, PPIE Board of Directors



Mission Statement

Pleasanton Partnerships in Education Foundation, a community-based organization, exists to enhance learning experiences for students of the Pleasanton Unified School District through a partnership of business, education and the community.

History of PPIE

The Pleasanton Partnerships in Education Foundation (PPIE) is a non-profit 501(c)3 foundation dedicated to supporting students in Pleasanton. For nearly 30 years, PPIE has worked to enhance education throughout the Pleasanton Unified School District through a partnership of business, education and community. PPIE raises funds to support critical programming and projects threatened by state budget cuts, and to fund projects/needs enhancing educational excellence for all students in the Pleasanton Unified School District. PPIE now serves nearly 15,000 students and over 800 teachers and administrators annually.

PPIE relies on the generous support of our extended community to help maintain excellence by meeting classroom needs unfunded by other means. In 2009, state funding cuts necessitated that PPIE expand its original mission to protect district-wide programs including class size reduction, technology specialists, instructional coaches and technology needs to support the district's technology plan. In response to the funding crisis, the business, education and parent communities have rallied to help us raise close to \$4 Million and continue to maintain strong momentum in fundraising today.



Contributions in 2015 - 2016

PPIE relies on the generous support of the extended community to help our schools maintain excellence by meeting classroom needs unfunded by other means. This support comes mainly in the form of the Annual Giving Fund Campaign, largely supported by families in the Pleasanton community and their employers providing matching donations. Additionally, corporate and community sponsors help fund the foundation's Innovative Grant Programs.

Giving Fund

The Giving Fund continues to raise critical funds to maintain quality education at all PUSD schools, providing \$551,000 in 2015-16 to fund 4 instructional coaches and technology needs at the middle and high school levels.

Instructional Coaches

The Pleasanton Unified School District has adopted an instructional coaching model to help teachers implement new curriculum and technology. These coaches provide training and support to teachers to engage 21st century students and help them create authentic learning experiences. This not only benefitted students in 2015-16 but for years to come as teachers incorporate new tools and strategies into their practice. In 2015-16, PPIE funded one instructional technology coach, one instructional math coach and two early literacy intervention coaches, reaching teachers across all levels and all schools.



INNOVATIVE GRANT PROGRAMS

\$4,375 given in 13 Student Grants

\$46,274 given in 21 Education Grants

As a first year teacher, my level of teaching grew immensely because of my work with PUSD's instructional coaches. I was able to work closely with math coaches, literacy coaches, and technology coaches to learn a variety of conferring strategies, manipulative techniques, thoughtful talking prompts, and critical thinking questions that will enhance my students' learning for years to come.

— Kylie Johnson, 3rd grade teacher at Fairlands Elementary

Contributions in 2015 - 2016

Technology

For the 2015-2016 school year, beyond the benefit of the instructional coaches PPIE provided \$183,000 to middle and high school sites to support the district technology plan.

Grants

In addition to the \$515,000 that PPIE provided the Pleasanton Unified School District directly, the foundation also supported teacher and student driven initiatives through the Innovative Student Grant, Innovative Educator Grant and High School Academic Team Grant programs. PPIE dispersed \$52,649 in funds to help educators and students explore innovative projects and expanded learning opportunities. These projects ranged from devices needed to support Project Lead the Way, an innovative program designed to help students learn problem-solving strategies, critical and creative thinking utilizing computer science, engineering and biomedical science, at elementary schools to the implementation of a TEDx event at a high school to welcome freshmen to campus.



INCOME	2014-2015	2015-2016
Giving Fund		
PUSD Families	\$445,229	\$475,750
Matching Contributions	\$43,043	\$39,838
Corporate Donors	\$74,227	\$64,735
Events	\$112,182	\$109,507
TOTAL INCOME	\$674,681	\$689,830

EXPENDITURES	2014-2015	2015-2016
Pleasanton Unified School District		
Instructional Coaches (4)	\$330,000	\$360,000
Middle Schools	\$110,000	\$75,000
High Schools	\$73,000	\$73,000
Preschools	\$2,000	\$2,000
Band and Strings Program		\$60,000
Innovative Grant Programs	\$47,980	\$52,649
Operating Expenses	\$48,265	\$46,140
TOTAL EXPENSES	\$611,245	\$668,789

Technology has breathed new life into my teaching and my students' learning. It is so exciting!

— Susan Huggins, 5th grade teacher at Mohr Elementary

Why do public schools need private donations?

Years ago, California schools were ranked as among the best nationally, with per-student spending at the top. With the passage of Proposition 13, in 1978 and other legal rulings, school districts were no longer the beneficiaries of their community's property taxes, and California's per-pupil funding plummeted. While it's now back on the rise, California still lags in terms of education spending on a per-pupil basis.

Furthermore, the Local Control Funding Formula, the funding formula put in place in 2013, replaces the old system of "revenue-limits" — general-purpose funding from the state, which was based on complex historical formulas and made up approximately 70% of the district's budget — with a per-student base grant that varies by grade span. Districts receive more money for each high-needs student, with additional funds for districts with large concentrations of these populations. Pleasanton received more state dollars under the old funding model.

In Pleasanton, we do not have a bond measure or a parcel tax to augment our funding for student programs and facilities. In fact, of all the districts in the county, Pleasanton has the lowest tax rate of \$23.90 per \$100,000 assessed valuation. Your donations to PPIE help bridge that gap, allowing our schools to educate our children at the level that our community demands by covering critical programs.



My family loves the Pleasanton Run for Education. Every year it's inspiring to participate alongside so many community members of all ages in support of our schools.

— Andrea Stokoe, Walnut Grove & Harvest Park Middle School Parent

Even though Pleasanton is a very affluent community, the school district doesn't share in that affluence, largely due to the new state funding (Local Control Funding Formula) program.

*— Jim Hansen
PUSD Interim Superintendent 2015-2016 & PPIE Board of Directors*

Corporate Donors

2016 Pleasanton Run For Education

Title Sponsor

ClubSport Pleasanton

Platinum Sponsors

The Walker Family Trust
Workday Foundation
101.7 KKIQ

Gold Sponsors

The Safeway Foundation
Veeva
7-Eleven

Silver Sponsors

Active Family Magazine
Alameda County Fairgrounds
AMM Fencing
BeReal Bars
Dynamite Light & Sound
Greenbriar Homes
Jersey Mike's Subs
John Muir Health
NorCal Ambulance
Odwalla/Zico/Suja
Pleasanton Rentals

Bronze Sponsors

Black Tie Transportation
Heritage Bank of Commerce
Huntington Learning Center
SC Builders
Stanford Health Care, ValleyCare
Steps Tutoring & SAT/ACT Prep
Wealth Management Associates

Mile Marker Sponsors

Agape Village Foster Family Agency
Alameda County Supervisor Nate Miley
Bay East Association of REALTORS
BUSC/RAGE
Charles Schwab & Co.
ChiroSports USA
The First Tee Tri-Valley
Girls Rule Flag Football
Intero Group
Larry Damaser and Renee Huber State Farm
Macaroni Kid
Mr. Pedometer.com
Plaza Chiropractic and Massage Therapy
Pleasanton Ridge Dental Group
Pleasanton Tutoring
Rockin Jump
Schlicher Orthodontics
Sensiba San Filippo LLP
Studio Blue
Summiting Group

Kids' Challenge Sponsors

Cushman & Wakefield
Delores Gragg
Sports Basement
Zone 7 Water Agency

Corporate Matching Gifts

Abbott Laboratories
Adobe
Advent
Altera
Ameriprise
Apple
Applied Materials
Bank of the West
Blackrock
Brocade Communications
Chevron
Cisco
Citrix
The Clorox Company
EA Electronic Arts
Ebay
GE Foundation
Genentech, Inc.
Google
Intel
Kaiser Permanente
Lam Research Foundation
Macy's Foundation
Mentor Graphics
Microsoft
Moody's Foundation
MSCI
Nvidia
Oracle
PG&E
Salesforce
Samsung
Sandisk
SAP
Silicon Valley Bank
Simpson Manufacturing
Thermo Fisher Scientific
US Bancorp
Veeva Systems
Verizon
Wells Fargo
Workday, Inc.
Xilinx

Key Foundation & Grant Program Partners

City of Pleasanton
The Clorox Company
Hines Management
Knights of Columbus
Oracle
Pleasanton Chamber of Commerce
Pleasanton Weekly Holiday Fund
The Safeway Foundation
United Way
Wente Foundation for Arts Education
Workday, Inc.

2015 Benefit Concert

Platinum Sponsor

Oracle
Robert Half
The Walker Family Trust
101.7 KKIQ

Gold Sponsor

Fremont Bank
Pleasanton Police Officers Association
Pleasanton Weekly
Vulcan Materials Company

Annual Report Credits

photos: Captivating Photos, Patrick Gannon, Sarah Landis, and Erik Scherer

design: Janet Grell



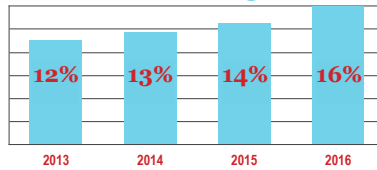
14,754

students benefit
from PPIE
every day



16%

of PUSD families contribute
to PPIE Giving Fund



surrounding communities
boast 50% to 80% participation

\$622,649

donated to
PUSD

for 2016/2017

“Even though Pleasanton is a very affluent community, the school district doesn’t share in that affluence, largely due to the new state funding (Local Control Funding Formula) program.”

— Jim Hansen
PUSD Interim Superintendent, 15/16
PPIE Board of Directors

DONATE

MATCH IT

DONE

82%

of donations in
2015 - 2016 came from
PLEASANTON FAMILIES

\$148,000
to middle & high
schools to support
technology

\$60,000
to elementary
band & strings

35

INNOVATIVE GRANTS AWARDED

CORPORATE MATCHING PARTNERS

43



April 23, 2017



INSTRUCTIONAL COACHES

Thank You for YOUR Support!

ppie.org